



AquaRo² & EDI²

INNOVATIVE LABWATER SYSTEMS



The new pure water systems **AquaRo²** and **EDI²** provide you with reliable and compact systems which produce up to ASTM Type II grade water. Both systems ensure high comfort at low operating costs.

Both systems are equipped with a pretreatment of activated carbon and softening components. **AquaRo²** systems are equipped with a reverse osmosis (RO) and **EDI²** with an additional electro deionization (EDI) cell to produce de-ionized water of Type II. The systems are equipped with 10 l, 35 l, 70 l or an individual sized storage reservoir which are filled with a production rate of 5-40 l/h. The de-ionized water can be dispensed with a fixed and flexible dispenser.

As an additional option the new **AquaRo²** and **EDI²** models enable remote diagnosis and service via Internet. This Remote Check offers you the opportunity to save time and money by fast and reliable support through the service team.

RANGE OF STANDARD SYSTEMS

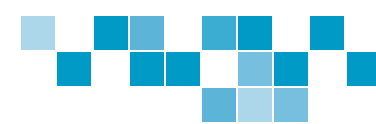
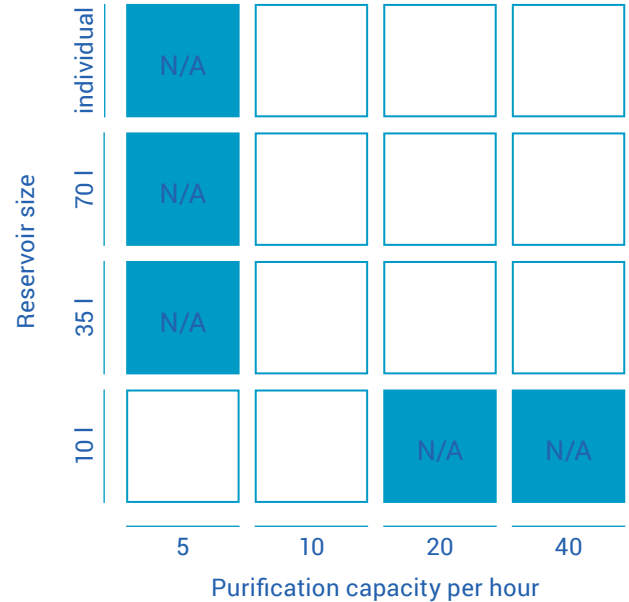
This product guide shows the range of our labwater systems and will help to select the best system for your needs.

Advantages of the new systems

- Compact housing
- Big touchscreen
- Remote Service module
- Menus and wizards easy to use and mistake avoiding
- New fixed an flexible dispenser

typical specifications

	EDI ²	AquaRo ²
Conductivity	<0.5µS/cm	depends on inlet water quality
TOC	< 50 ppb	< 50 ppb
Germ	< 100 KBE/ml	< 100 KBE/ml







OPTIONS

TOC monitoring

(only for EDI²)

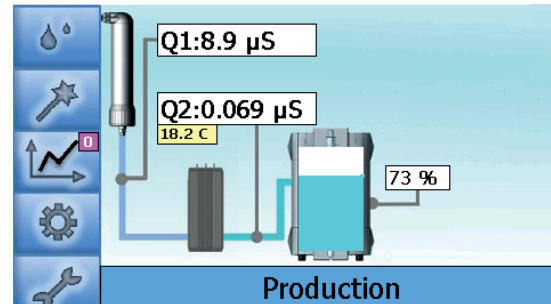
The TOC monitoring during production and intermittent measurements during non-use periods allows to check the organics in water continuously. The TOC value is measured between 1 and 30 ppb and can be shown in the display to monitor organic impurities.

UV lamp

For sensitive applications the systems can be equipped with an UV lamp.

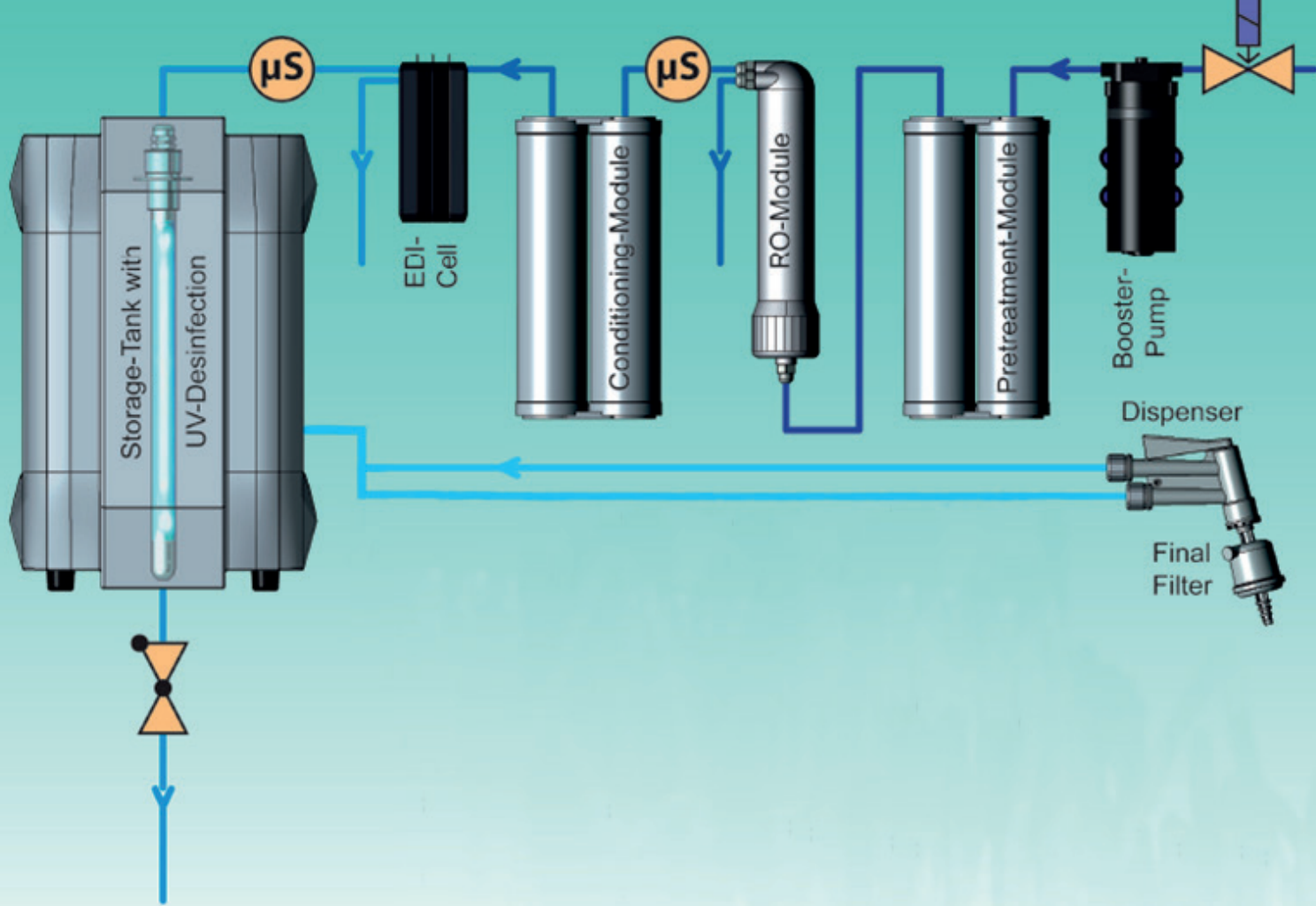
memTap

Our new automatic memTap allows the volumetric controlled tapping of water with a dispenser arm. The arm can be moved horizontally and vertically. Preset of tap-volume is in 0.1 l steps. This system prevents overflow of containers and allows to tap water without supervising. The 3.5" display with touch screen offers you all relevant data at a glance.



main screen







WolfLabs

Pricing on any accessories shown can be found by keying the part number into the search box on our website.

The specifications listed in this brochure are subject to change by the manufacturer and therefore cannot be guaranteed to be correct. If there are aspects of the specification that must be guaranteed, please provide these to our sales team so that details can be confirmed.

www.wolflabs.co.uk

Tel : 01759 301142

Fax : 01759 301143

sales@wolflabs.co.uk

Please contact us if this literature doesn't answer all your questions.